

# RJ10-F-F-V1A

## 1. Description:

RJ10-F-F-V1A is a simple RJ9/RJ10/RJ22 4P4C Female to RJ9/RJ10/RJ22 4P4C Female pass-through adapter breakout board. It brings all 4 pins of two RJ10 4P4C Female connectors to screw terminal blocks and headers for easy testing, prototyping and breadboard connection. All 4 pins of a Female connector directly connect to another Female connector. User can also use the two 4 pins headers on both sides of the breakout board to connect to breadboard or prototype PCB.

## 2. Features:

- All 4 pins of two RJ9/RJ10/RJ22 4P4C Female connectors to screw terminal blocks
- All 4 pins of a Female connector directly connect to another Female connector.
- Various connecting method chosen by users.
- 0.8"(20.32mm)X1.2"(30.48mm) board dimensions

## 3. Parts:

- 1) 1pc X RJ10-F-F-V1A PCB
- 2) 2pc X RJ9/RJ10/RJ22 4P4C Female Connector
- 3) 1pc X 4pin 0.1"(2.54mm) spacing terminal block
- 4) 1pc X 8pin 0.1"(2.54mm) header

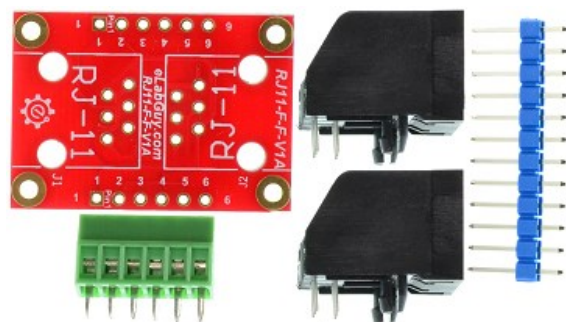
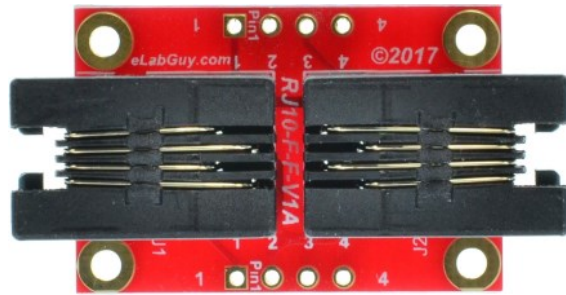


Figure 1: Parts inside the kit  
(Note: the module is not assembled, user can decide which connector to use on the module.)

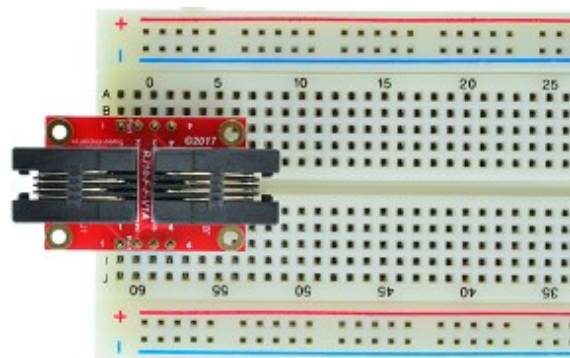


Figure 2: Example of connecting the RJ10-F-F-V1A on a breadboard (Note: This picture only shows the pins spacing, actual use may not be used on a breadboard)

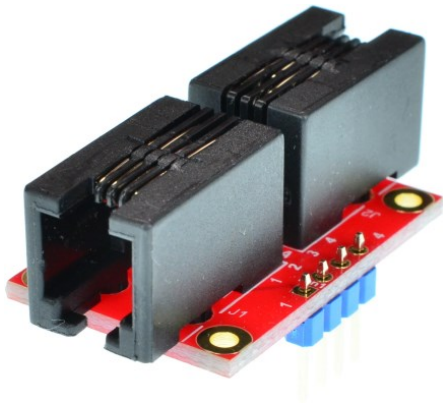


Figure 3: RJ10-F-F-V1A with headers

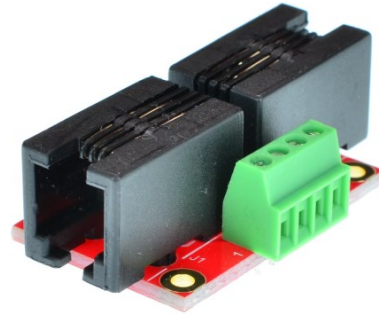
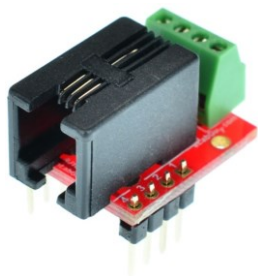
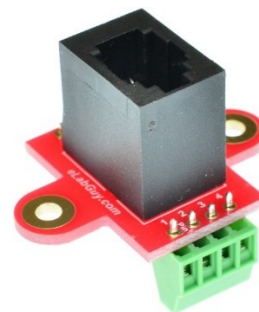


Figure 4: RJ10-F-F-V1A with terminal block

## Related products from eLabGuy:



**RJ45-BO-V3A**



**RJ10-BO-V1AV**